



The trading company of
Ether-tec International Ltd
31 Sandy Farm Business Centre
Sands Road, The Sands,
Farnham, Surrey,
GU10 1PX, United Kingdom

Tel.	+44 (0)845 6588 669
Fax.	+44 (0)845 6588 644
Email.	info@diff-tech.co.uk
Web.	www.diff-tech.co.uk

Technical Specification

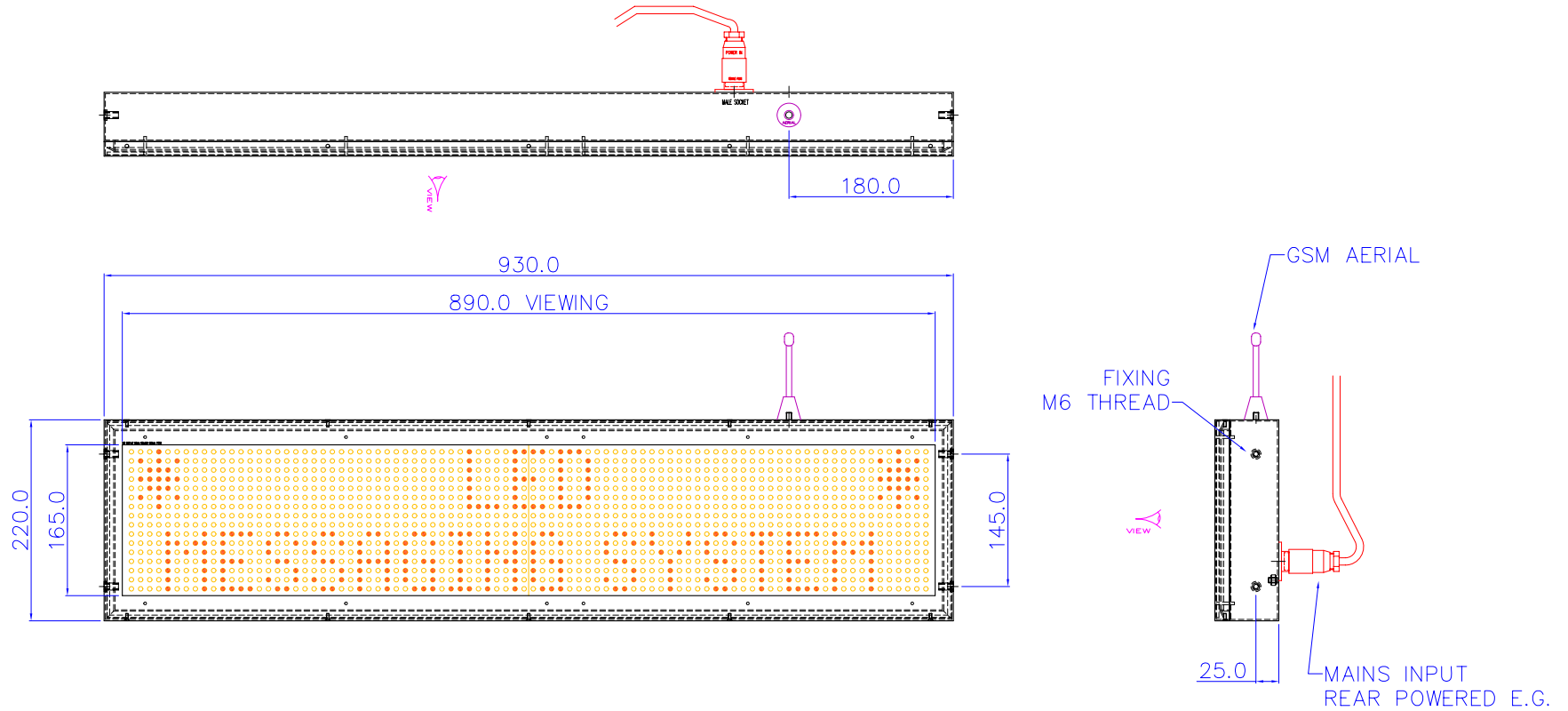
Product Name:	BI-LINE WALL MOUNTED LED MASTER 88 x 16	
Part Number:	0006-0035	
General:	Unit Overall Dimensions	930 x 220 x 70 mm (w h d bracketery extra see dwgs)
	Viewing Area	890 x 165 mm
	Mass	15kg (excluding bracketery)
	Mean Bare Panel Luminance	3000 cd/m ² max (in bright sunshine 4 levels of luminance down to 25% in full darkness)
Components:	Superstructure	Fully welded steel tray enclosure
	Door	Welded steel door holding seal and front glazing (acrylic)
	Lock	Screw retained
Material Specifications:	Mild Steel	BS EN 10111: 1998 HR4P+0, sheet to S275, box section to S355 max. tensile stress
	Glazing	2mm acrylic clear
	Ingress Seal	Closed cell foam
	Finishes	Polyester powder coat (black as standard)
Electrical Specifications:	LEDs	5mm diameter Amber 60deg viewing angle
	LED array	88 (w) x 16 (h) 10mm pitch [1408 LEDs total]
	Mains Input	220-240Vac 50Hz [switch mode power supply]
	Power consumption	50W peak
	Protection	Integral fuse only
	Switching	None - switched on external circuit - designed to be left 'on'
Telemetry and display:	Modem	GSM/GPRS module - triband 900/1800/1900 MHz
	Method of message programming	SMS via secure website or mobile phone (160 characters)
	Message property	Top line stationary (11 characters) bottom line scrolls (use rest of SMS message characters)
	Features	4 flashing corner beacons (switchable on/off via SMS)
	Diagnostics	Self-test (switchable on/off via SMS)
	Status request	LED unit can send back SMS message to verify 'on' status and current message displayed
	Security	Secure website advised for sending SMS messages each unit will only accept from one source
	Time	Real time setting possible daily default messages possible
	Protocols	Bespoke commands (see below)
	Aerial	Unit complete with externally mounted GSM aerial
Other:	Fixing	Wall mounted via brackets fixed to unit sides
	Wind Loading	Not calculated
	Ingress Protection	IP54 min

Example protocol commands

To be sent to LED unit via SMS (text messaging)

Basic message:	Welcome#Enjoy your time shopping	[# separates top and bottom line]
Self test on/off	<S/ON> <S/OFF>	
Status request	<H>	
Flashing beacons on/off	<B/ON> <B/OFF>	

GENERAL ARRANGEMENT - LED UNIT



SHEET 1/2

ISS	-
CHANGE	-

REMOVE ALL BURRS & SHARP CORNERS
 DIMENSIONS IN mm
 TOLERANCES U.O.S.
 0 ± 1.0
 0.0 ± 0.5
 0.00 ± 0.20

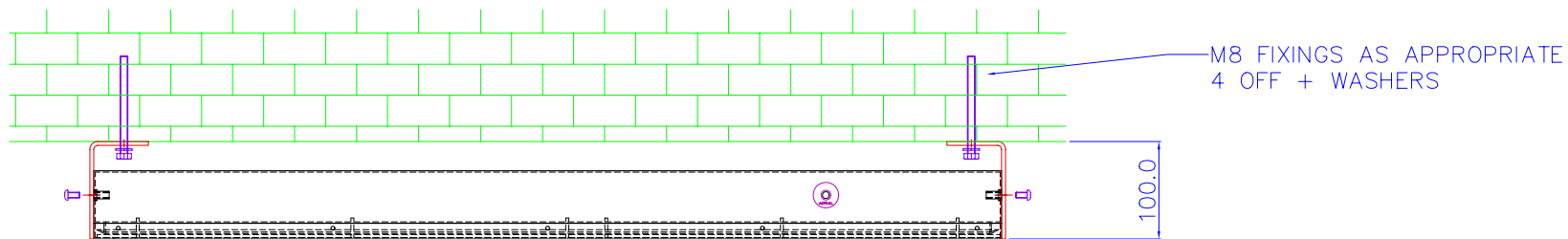
DIFFUSION
 technologies

THIS DRAWING IS THE PROPERTY OF EBER-TEC INTERNATIONAL LTD & SHALL NOT BE CONVEYED TO A 3RD PARTY WITHOUT CONSENT.

DRAWN RI 03/03/08	CHECKED RI 03/03/08	SCALE 1:1
TITLE BI-LINE WALL MOUNTED LED MASTER 88 x 16		PROJECTION
PROJECT POST MOUNT 6-SH		DWG No. 0006-0035-1

ISSUE

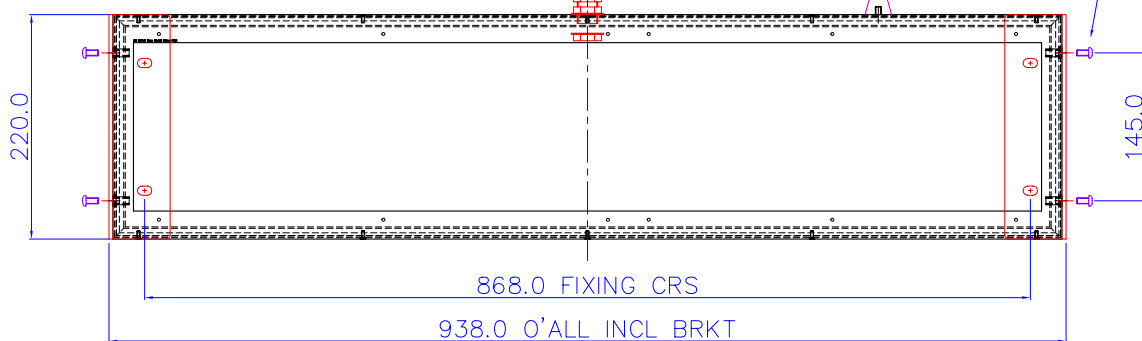
SIMPLE FIXING - TOP POWERED INPUT



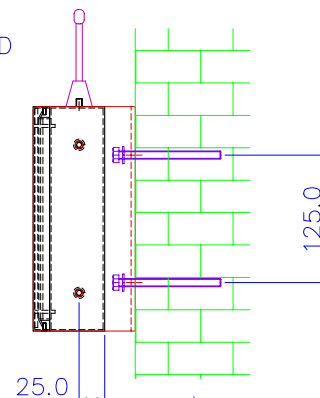
M8 FIXINGS AS APPROPRIATE
4 OFF + WASHERS

MAINS INPUT M20 GLAND
SUPPLIED FITTED WITH 3m CABLE

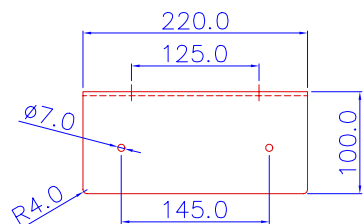
M6x12 TORX
SECURITY HEAD
4 OFF



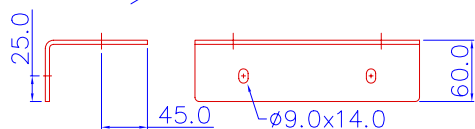
VIEW



WALL



BRACKET 2 OFF
4.0 ZINTEC
PP COAT BLACK



SHEET 2/2

ISS	-
CHANGE	-

REMOVE ALL BURRS & SHARP CORNERS
DIMENSIONS IN mm
TOLERANCES U.O.S.
0 ± 1.0
0.0 ± 0.5
0.00 ± 0.20

DIFFUSION
technologies

THIS DRAWING IS THE PROPERTY OF ETHER-TEC INTERNATIONAL LTD & SHALL NOT BE CONVEYED TO A 3RD PARTY WITHOUT CONSENT.

DRAWN RI 03/03/08	CHECKED RI 03/03/08	SCALE 1:1
TITLE BI-LINE WALL MOUNTED LED MASTER 88 x 16		PROJECTION
PROJECT POST MOUNT 6-SH		DWG No. 0006-0035-1

ISSUE	
-------	--